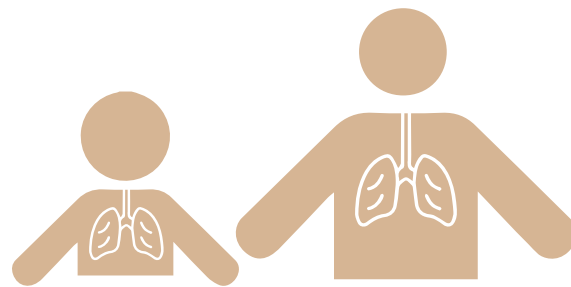


CLEAN AIR PARTNERSHIP

Air Quality and Your Health

Did you know that more than 4 in 10 people, approximately 41.1% of the U.S. population, live in counties with unhealthy levels of ozone or particle pollution? See below for more on how air quality affects overall health and where St. Louis ranks on the map for ozone pollution.



Air pollution is a serious health threat. It can trigger asthma attacks, hinder lung development in children and even be deadly.

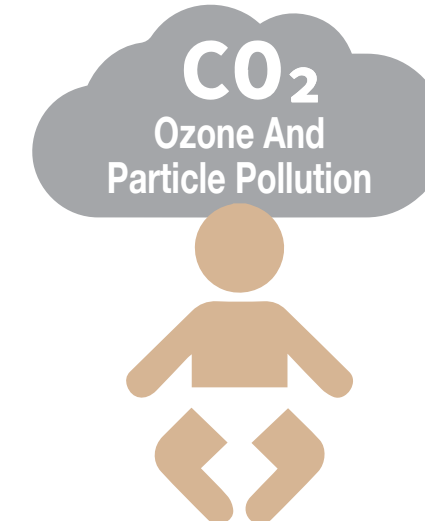
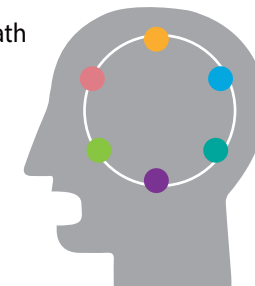


People who live or work near highways ways may face greater risk of air pollution caused deaths.



High concentrations of ground-level ozone can cause:

- shortness of breath
- coughing
- wheezing
- headaches
- nausea
- eye and throat irritation



Linked to low birth weight in newborns.

SIGN UP : CleanAir-StLouis.com



GOOD



MODERATE



UNHEALTHY
SENSITIVE GROUPS



UNHEALTHY
EVERYBODY



St. Louisans can sign up to receive color-coded air quality forecasts via email at www.cleanair-stlouis.com to ensure they know what the next day's air quality is forecast to be and if they should take precautions by altering their outdoor activities to avoid being exposed to polluted air.